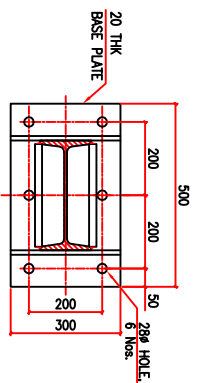
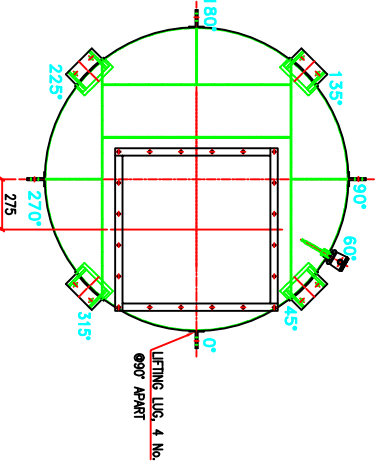


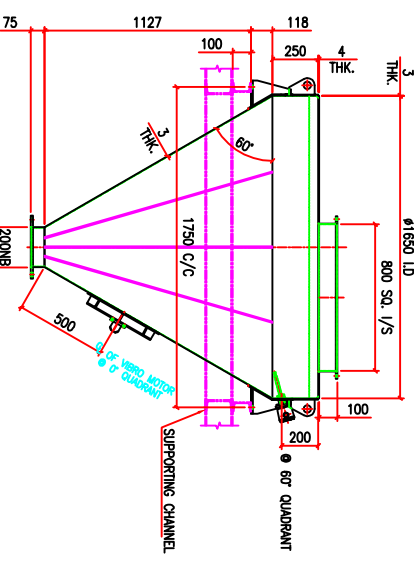
PLAN



VIEW : V1-V1



PLAN



ELEVATION

(FOR LIFTING LUG & SUPPORT LOCATION, REFER PLAN)

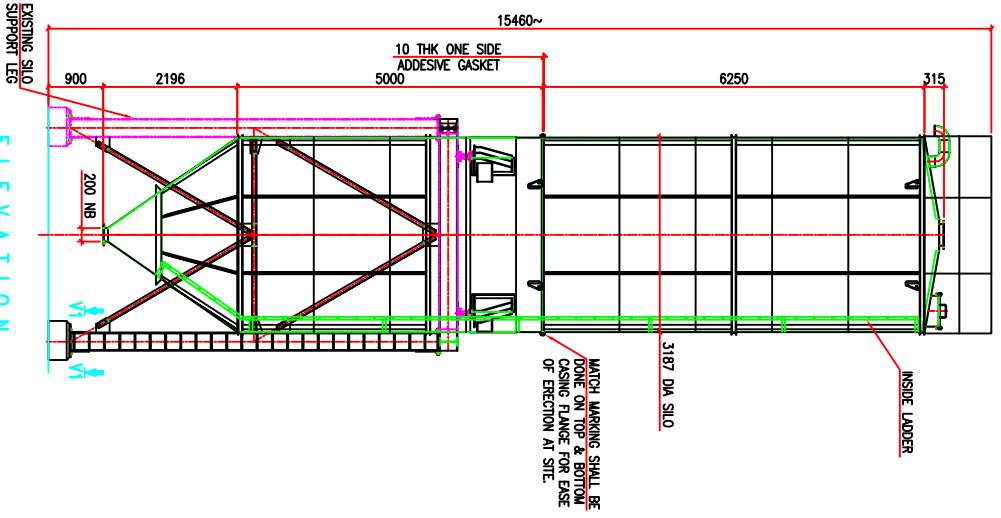
WEIGHT SUMMARY	
NEW SILO	= 5,745 kg
SUPPORTING FRAME	= 2,010 kg
HAND RAIL & TOEGUARD	= 145 kg
TOTAL FINISHED WEIGHT	= 7,900 kg

NOTES:
1. ALL DIMENSIONS ARE IN MM.

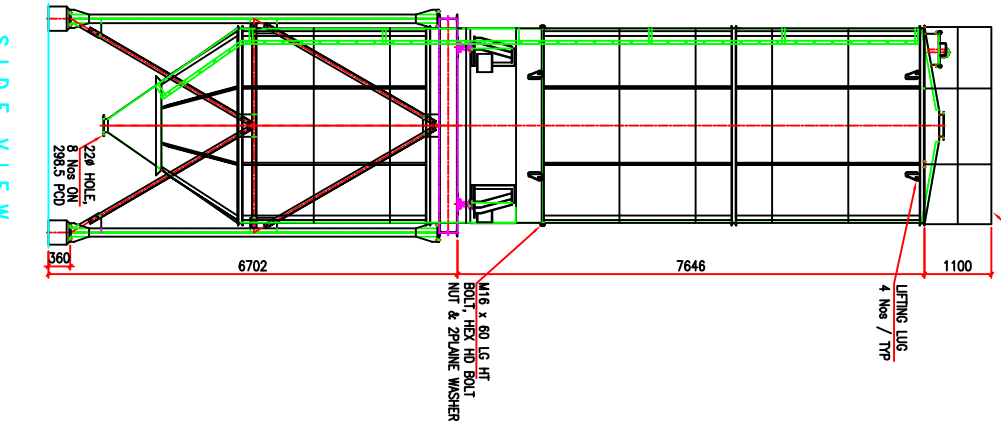
SCORPIO ENGINEERING BMH PVT LIMITED
BANGALORE, INDIA

DESIGNED BY: CHANDRASEKHAR	DATE: 9.8.2014	SCALE: NTS
CHECKED BY: CHANDRASEKHAR	DATE: 9.8.2014	SCALE: NTS
APPROVED BY: CHANDRASEKHAR	DATE: 9.8.2014	SCALE: NTS

TITLE :- GA OF STORAGE SILO/HOPPER
SHEET 1 OF 1



ELEVATION



SIDE VIEW

MATCH MARKING SHALL BE DONE ON TOP & BOTTOM COUPLING FLANGE FOR EASE OF ERECTION AT SITE.

HAND RAIL WITH TOEGUARD

LIFTING LUG 4 Nos / TYP

116 x 60 LG HT BOLT, 116X 110 BOLT NUT & Z-PLATE WASHER

EXISTING SILO SUPPORT LEG

INSIDE LADDER

3187 DIA SILO

10 THK ONE SIDE ADHESIVE GASKET

2196

200 NB

900

15460~

6250

315

3800

3500 C/C

3Ø

20 THK

BASE PLATE

500

200

200

50

28Ø HOLE

6 Nos.

300

1100

LIFTING LUG 4 Nos / TYP

116 x 60 LG HT BOLT, 116X 110 BOLT NUT & Z-PLATE WASHER

7646

6702

22Ø HOLE

28ØS ØD

8 HOLE ØD

29ØS ØD

ØS

116 x 60 LG HT

BOLT, 116X 110 BOLT

NUT & Z-PLATE WASHER

1100

1100

1100

1100

1100

1100

1100

1100

1100

1100

1100

1100

1100

1100

1100

1100

1100

1100

1100

1100

1100

1100

1100

1100

1100

1100

1100

1100

1100

1100

1100

1100

1100

1100

1100

1100

1100

1100

1100

1100

1100

1100

1100

1100

1100

1100

1100